



Snaeder
ENGINEERING

Integrated
Engineering
Solutions





"At Snaeder Engineering we deliver our solutions through in-house skilled and experienced staff and a larger team of associate experts. As our commitment is for the duration of the project and long after completion, we work externally and independently and are focused on ensuring projects meet their objectives and deliver the expected value. We believe in delivering to accepted 'good practices'."

MISSION

Csnaeder Engineering's mission is a solemn pledge to uphold the highest standards of engineering excellence, safety, and environmental responsibility. We are driven by a passion for engineering innovation, guided by our unwavering commitment to our clients, our employees' well-being, and our responsibility to protect and preserve the environment for current and future generations."




Snaeder
ENGINEERING



VISION

our vision embodies our dedication to excellence in employee development, sustainability, client satisfaction, and the delivery of value-added services. It serves as our guiding star, shaping our culture and propelling us towards continued success in engineering and design.

OUR CORE VALUES

INTEGRITY

We Are Honest, Ethical And Genuine. We conduct our business in accordance with the highest standards of professional behaviour and ethics. We are transparent, honest and ethical in all our interactions with our colleagues, clients, business partners, shareholders and the greater communities in which we exist.

QUALITY

Everything We Do. We Always Strive To Excel And Set Higher Benchmarks. We Take Pride In Providing The Best Value Products And Services That We Stand By, Ensuring Client Satisfaction And Corporate Profitability. Quality Is What Sets Us Apart And Enables Our Sustainable Growth."

TEAMWORK

Together We Make The Difference. Our People Are Our Most Important Asset And The Key To Our Success. That's Why We Respect One Another, And Consistently Demonstrate Integrity And Commitment In Our Words And Actions. We Empower Each Other To Be Effective And Efficient.



SAFETY

First and foremost, Always it's in our hands Safety is the cornerstone of Snaeder Engineering and no work is ever too urgent or too important that we cannot take time to do it safely. Safety is a way of life; a choice that becomes an instinct.

ACCOUNTABILITY

We Are Responsible For Our Actions And Results. As Individuals, Or Through Teamwork, We Are Empowered To Deliver Based On Our Promises. We Take Responsibility For The Work We Provide, The Decisions We Make And The Results We Achieve. We Honour Our Commitments And Take Ownership Of Working Diligently And Building Stronger Connections.

INNOVATION

Using Technology To Deliver For Our Customers. It Is Our Continued Commitment To Innovation That Has Brought Us To Where We Are Today. We Combine Mining And Engineering Expertise With Patented Technology To Discover New Ways To Optimise Safety And Productivity.



Snaeder Engineering seeks to provide the very best in engineering services in every project.

To create an offering that is well regarded, we combine a depth of industry knowledge and a level of customer service that comes from operating at a local level on a global scale.

To provide the highest quality service delivery to your project we provide firsthand and high-quality design, construction works, supervision and consultancy services.



Website: www.snaeder.com

E-mail: contact@snaeder.com



Engr. Francis Uwah (FNSE, FIMC, FNiSafetyE)
 MD/CEO
 Mechanical Engineer
Studied at:
 University of Nigeria, Nsukka.
 Robert Gordon University, Aberdeen, Scotland
Membership:
 Nigerian Institution of Mechanical Engineers (NIMECHE)
 Fellow Nigerian Society of Engineers (NSE)
 Fellow, Institute of Management Consultants (FIMC)
 Fellow, Nigerian Institution of Safety Engineers (FNiSafetyE)
 Council for the Regulation of Engineering in Nigeria (COREN)



Engr. Dr. Bassey Bassey Okon (FNSE, FNiMechE)
 Mechanical Consultant
Studied at:
 University of Uyo
 University of Liverpool, United Kingdom.
 University of Manchester, United Kingdom.
 University College, London.
Membership:
 Fellow, Nigerian Institution of Mechanical Engineers (FNIMECHE)
 Nigerian Society of Engineers (NSE)
 Council for the Regulation of Engineering in Nigeria (COREN)



Engr. Dr. Ubong Ukommi (MNSE, MNIEEE)
 Electrical Consultant
 Electrical Engineer
Studied at:
 Federal University of Technology, Owerri.
 University of Surrey, Surrey, United Kingdom. (Ph.D)
Membership:
 Nigerian Institution of Electrical Electronics Engineers (NIEEE)
 Nigerian Society of Engineers (NSE)
 Council for the Regulation of Engineering in Nigeria (COREN)



Engr. Akanu-Ibiam Ndon
 Structural Consultant
 Civil/Structural Engineer
Studied at:
 University of Benin.
 University of Leeds, United Kingdom.
Membership:
 Nigerian Institution of Civil Engineers (NICE)
 Nigerian Society of Engineers (NSE)
 Council for the Regulation of Engineering in Nigeria (COREN)



Arc. Nelson Essienette (FNIA)
 Architectural Consultant
Studied at:
 University of Jos (MSc)
 Zabeel Institute of Technology, United Arab Emirates.
Membership:
 Fellow, Nigerian Institute of Architects (fNIA)
 Architects Registration Council of Nigeria (ARCON)



Engr. Alorye Ogar Iduku (MNSE)
 Executive Director
 Civil/Structural Engineer
Studied at:
 Cross Rivers State University of Technology.
 University of Uyo.
Member:
 Nigerian Institution of Civil Engineers (NICE)
 Nigerian Society of Engineers (NSE)
 Council for the Regulation of Engineering in Nigeria (COREN)



Arc. Amanam Utah
 Resident Architect
Studied at:
 University of Jos (MSc)
Membership:
 Member of:
 Nigerian Institute of Architects (NIA)
 Architects Registration Council of Nigeria (ARCON)



QS Olufunke Oyegoke
 Consultant Quantity Surveyor
Studied at:
 Rufus Giwa Polytechnic
 University of Washington, USA.
Membership:
 Nigeria Institute of Quantity Surveyors (NIQS)
 Royal Institution of Chartered Surveyors, United Kingdom (RICS)
 Quantity Surveyors Registration Board of Nigerian (QSRBN)
 Project Management Institute (PMI)

KEY PERSONALITIES

BUILDING CONSTRUCTION DESIGN CONSULTANCY

Snaeder Engineering has, over the past years strengthened and developed its capabilities in design and consultancy of engineering projects both by organic growth, knowledge acquisitions and corporate experience. The organic growth has taken place both by hiring staff with international experience and a handful of new graduates. The staff in our design centers of excellence and six offices is truly national with a multicultural background in education, language and nationality.

Clients

Snaeder Engineering works for public and private infrastructure owners as well as for contractors. We advocate a close dialogue with the contractor (BOT and design-build projects) in order to take all data into account and to optimize the design and construction.

Understanding our client's needs and combining this with our knowledge and experience to successful project completion is our goal.

Our clients currently include the Akwa Ibom State Government of Nigeria through the Ministries of Special Duties and Agriculture, The Federal Government of Nigeria through the Niger Delta Development Company (NDDC), NEGRIS Oil Group, Shell Petroleum Development Company, VERINI Construction Nigeria, Wichino Engineering (WE) Nigeria, Etc.

Experience

Snaeder Engineering possesses extensive International experience in all aspects of Building Design, Construction and Consultancy. This experience is documented by the many successful, completed projects in different parts of the country, from Lagos in the west to Port Harcourt in the South and from Abuja in the center to Kano in the north. Focus has been on developing the relationship with our clients with the aim of providing added value to the clients' projects.

The very diverse, multidisciplinary and multicultural background and professional experience have been brought to bear for the benefit of our clients and the projects we work on.

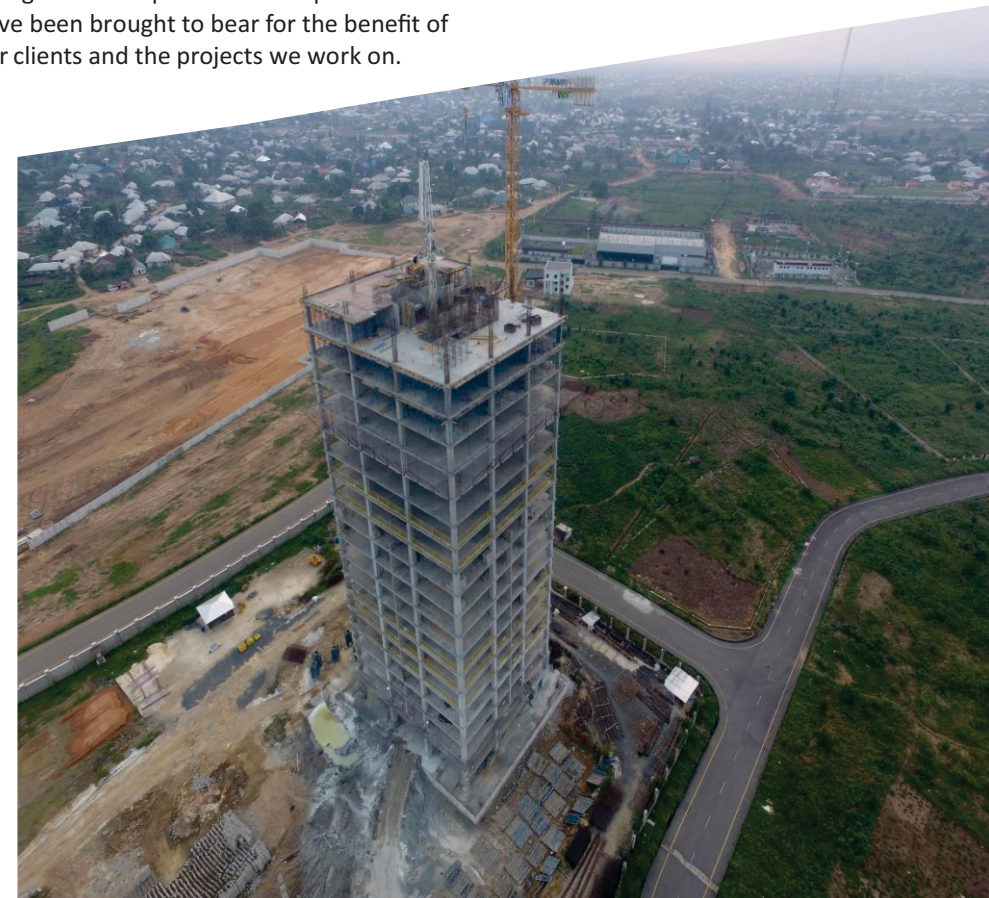
Quality Management

All design activities are carried out in accordance with the individual project quality plan tailored to meet the specific requirements of each project.



Services and Expertise

Snaeder Engineering cover the whole life cycle of services a project from their early ideas over studies and design to the operational phase to the operation phase and rehabilitation or decommissioning. and Our services range from professional advice on a specific problem to comprehensive planning, total engineering implementation of large scale projects. Our involvement in complex and demanding projects over the years has led to the development of particular in-house knowledge.





21-Storey (High Rise) Office Building

LOCATION: Uyo Central Business District,
Udo Udoma Avenue,
Uyo, Akwa Ibom, Nigeria

CLIENT: Ministry of Special Duties,
Akwa Ibom State Government.

SERVICES: Consultant

Supervise all construction works.
Vet design drawings.
Ensure standardization.
Ensure international best practices.
Issue interim certifications in
collaboration with the client.

**COMPLETED CONSULTANCY
SERVICES**



Snaeder is playing a pivotal role in the development of Akwalbom. Through the design and construction of The International airport access roads to the central area, boulevards, highways and regional road networks as well as entire residential districts, Snaeder continues to augment urban development for the country's capital, according to the Akwalbom Master Plan.



ST GABRIEL'S COCONUT FACTORY , MKPAT ENIN

**C
O
N
S
U
L
T
A
N
C
Y**

The St. Gabriel Coconut Oil Factory is the largest of its kind in all of Africa. Being built to international standards with international knowledge cooperation from Istanbul, Singapore, United States, India and Nigeria.

The project sits on a total of 78,747 square meters of land surrounded by 50,000 hectares of coconut plantation cutting across three local government areas.

ST. GABRIEL COCONUT OIL FACTORY

LOCATION: Mkpatein Local Government Area,
By East-West Road,
Akwa Ibom, Nigeria

CLIENT: Ministry of Agriculture,
Akwa Ibom State Government.

SERVICES: Consultant

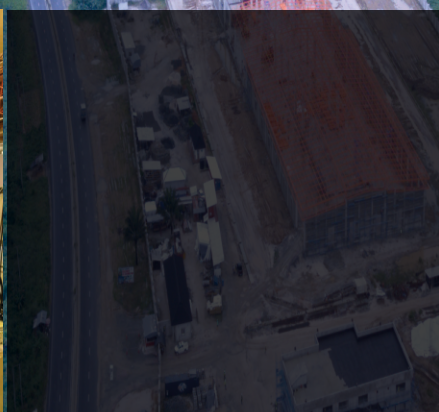
Supervise all construction works.
Vet design drawings.
Ensure standardization.
Ensure international best practices.
Issue interim certifications in
collaboration with the client.

The factory will produce 22 tons of virgin coconut oil for export by processing over 300,000 coconuts per day in three shifts.

The construction works are at 75% completion. Equipment for the factory include conveyor belt systems, buffer tanks, de-shellers, power grinders, industrial sieves, band dryer, oil expellers and filtration machines.

Our consultancy services have benefited the project in the areas of re-design, scope management, project management advice, construction assistance and equipment prospecting.





Snaeder is playing a pivotal role in the development of Akwalbom. Through the design and construction of The International airport access roads to the central area, boulevards, highways and regional road networks as well as entire residential districts, Snaeder continues to augment urban development for the country's capital, according to the Akwalbom Master Plan.



#UdomLive

VICTOR ATTAH INTERNATIONAL AIRPORT NEW TERMINAL BUILDING

LOCATION: Uruan/Okobo Local Governemnt Areas,
Akwa Ibom, Nigeria

CLIENT: Ministry of Special Duties,
Akwa Ibom State Government.

SERVICES: Consultant
Supervise all construction works
Report on project progress
Ensure Standards. Carry out Tests. Vet drawings.
Carry out monitoring and Evaluations. Issue IPCs.

The proposed new victor attah international airport terminal design is focused on providing a simple and coherent layout with well-defined routes of progression from the landside to the airside and vice versa. Passenger flows is largely linear, walking distances are minimized. The efficiency of access and egress is another important consideration that informed the layout of landside roads, drop -off and pick up kerbs, and the layout of the car parking opposite the terminal.

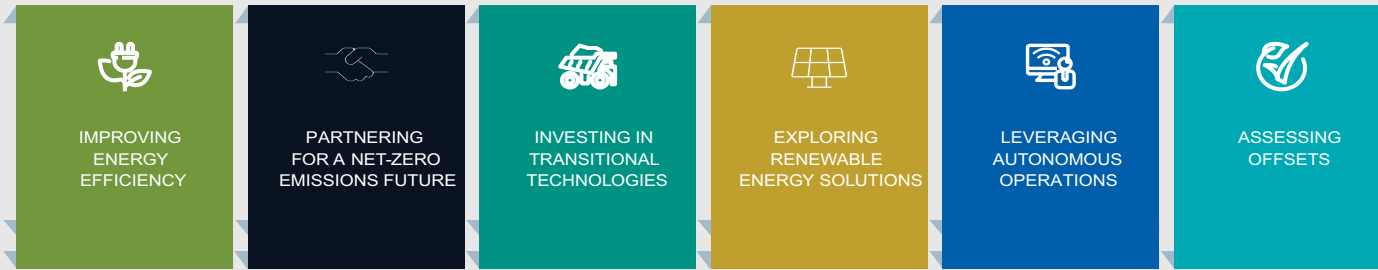
The design of the built form and the internal layout is based on a flexible and adaptable framework capable of responding to the ever changing demands of both the aviation industry and the passengers. The number of ATM's (Air Traffic Movement per hour) is forecasted to reach a total of 1,166,048 movements by 2029. The new terminal layout provides capacity for 1 code F and 4 code C stands on the apron. The terminal provides 5 air bridges and a bus gates to serve remote stands.

The design of the new terminal and its associated facilities comply with international standards including IATA and ICAO with respect to facility provisions, terminal and apron planning as well as safety and security. UBC or local Nigerian regulation applies to all matters relating to buildings regulations, building standards and construction norms. NFPA is used in setting up the fire strategy and safety provisions with respect to safe evacuation, fire protections and firefighting systems.



Snaeder is playing a pivotal role in the development of Akwalbom. Through the design and construction of The International airport access roads to the central area, boulevards, highways and regional road networks as well as entire residential districts, Snaeder continues to augment urban development for the country's capital, according to the Akwalbom Master Plan.





Key parameters and design approach for airport terminal include:

1. Minimum level changes and short walking distances to ensure ease of movement and passenger comfort.
2. Linear movement and passenger comfort.
3. Adequate areas for queuing to all processing areas with adequate number of processor units to ensure maximum waiting time of 10minutes is achieved at all key processing areas including check-in, emigration, security and customs.
4. Flexibility and adaptability to allow for future changes to the internal layout are made with ease.

STANDARDS

International Air Transport Association (IATA)-ADRM 10th Edition
 International Air Transport Association (IATA) guideline and best practices.
 European Civil Aviation Conference (ECAC)
 European Aviation Safety Agency (EASA)
 US FAA Standards
 ICAO International Civil Aviation Organization ANNEX 14 and other related Annexes
 ICAO Fire and Rescue
 Nigerian Civil Aviation Authority (NCAA)
 NCAA Licensing requirement for Aerodrome Operation
 NICAA and Nigerian Building Code
 Nigerian connection and operational standards- electricity, water, waste, sewage.
 International Building Codes (IBC)
 NFPA 101
 American Disabilities Act (ADA).



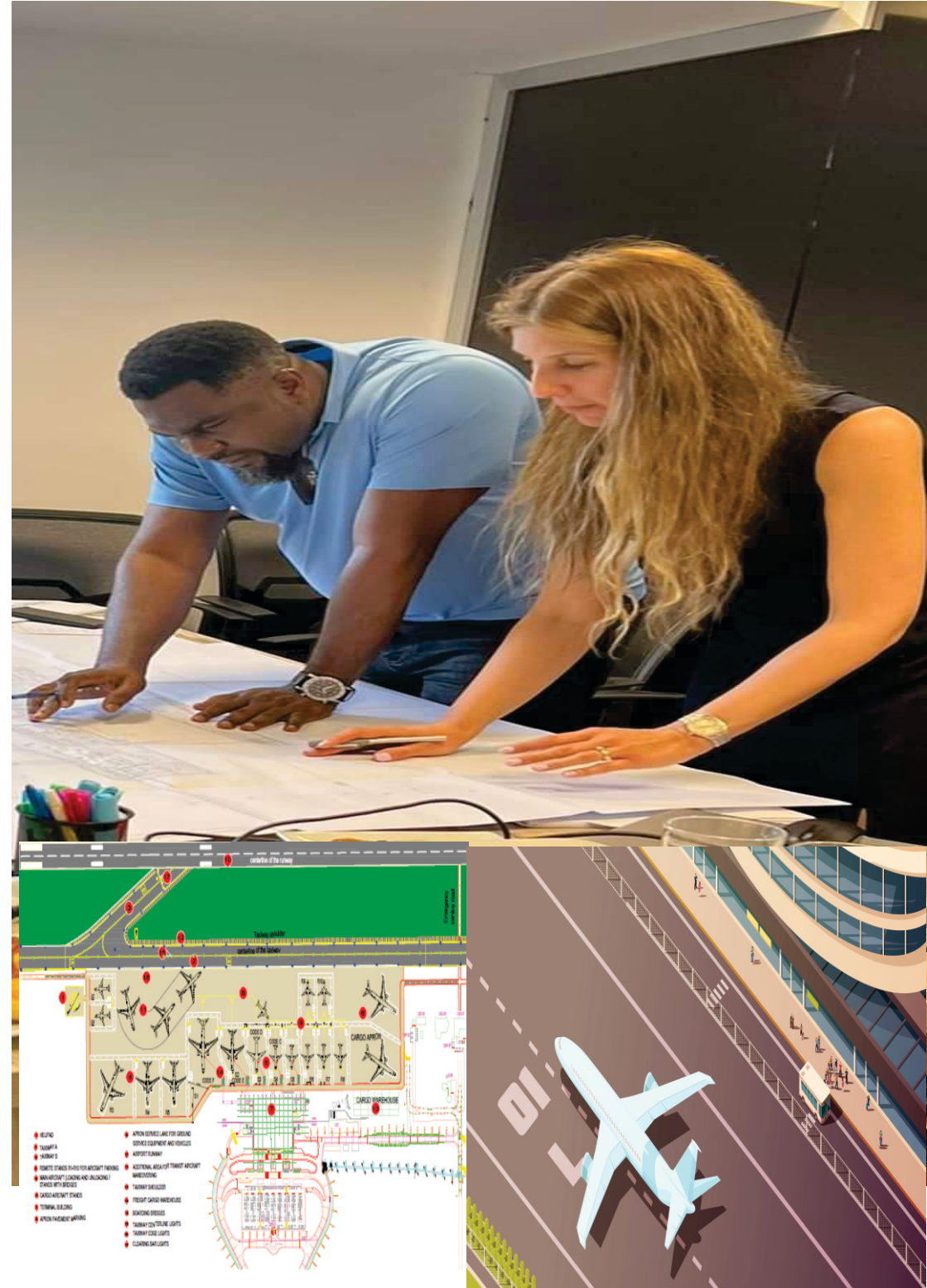
AIRPORT TERMINAL DESIGN

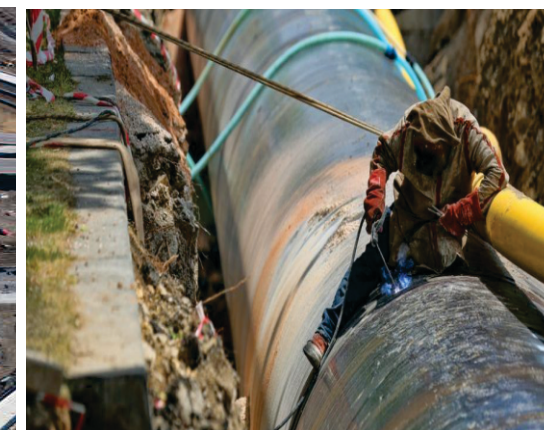
Snæder Engineering stands as a paramount authority in the realm of pioneering and cutting-edge airport facility design solutions. With an unwavering passion for pushing the boundaries of aviation infrastructure to new heights, our expertise lies in the creation of airport environments that transcend conventional standards. We seamlessly blend functionality, operational efficiency, breathtaking aesthetics, and a steadfast commitment to sustainability into every project we undertake.

Our distinguished team comprises visionary architects, engineers, and designers who operate collaboratively, bringing their collective expertise to bear on each project. This collaboration enables us to redefine the travel experience and set entirely new industry benchmarks.

Our core mission at Snæder Engineering transcends the conventional notion of airports as mere transportation hubs. Instead, we aspire to craft destinations that go beyond utility, aiming to inspire, captivate, and facilitate seamless travel experiences for both passengers and operators alike. This aspiration is rooted in our unwavering commitment to meticulous design principles, the seamless integration of cutting-edge technology, and an unyielding dedication to sustainable practices.

Our ultimate objective is nothing short of elevating the global travel ecosystem to a higher plane, leaving an indelible mark on the evolution of the aviation industry. We stand resolute in our pursuit of excellence, continuously pushing the boundaries of what is possible in airport facility design, and redefining the future of aviation infrastructure.





Terminal Design: Our terminal designs prioritize passenger flow, comfort, and convenience. We create intuitive layouts that optimize check-in, security, retail, lounges, and boarding areas, ensuring a harmonious journey from curbside to gate.

Runway and Apron Planning: Our expertise extends to runway and apron planning, considering factors such as aircraft types, operational efficiency, safety, and future expansion. We design configurations that accommodate diverse fleets and support air traffic growth.

Sustainability Integration: Environmental responsibility is at the core of our designs. We incorporate sustainable practices, energy-efficient systems, and renewable energy sources to minimize the environmental footprint of airport operations.

Security Infrastructure: Our security solutions prioritize both passenger safety and efficient security processes. We implement cutting-edge technologies to streamline security checkpoints while maintaining the highest safety standards.

Smart Technology Integration: We leverage the power of smart technology to enhance passenger experience and operational efficiency. From biometric identification to digital wayfinding, our designs embrace the latest advancements in airport technology.

Landside and Airside Connectivity: We design comprehensive transportation networks that seamlessly connect airports to surrounding cities and regions. Our designs encompass roadways, parking facilities, public transportation integration, and airside vehicle movement.

Retail and Commercial Spaces: Understanding the importance of non-aviation revenue streams, we create engaging retail and commercial spaces within the airport. Our designs harmonize commercial offerings with the overall terminal ambiance.





Snaeder
ENGINEERING



ROAD CONSTRUCTION

ROAD CONSTRUCTION

In the sphere of engineering innovation, one company stands out as a beacon of progressive thought and visionary action: Snaeder Engineering. With an indomitable spirit that challenges conventional construction norms, Snaeder Engineering consistently forges new paths, reshaping the very landscape of the industry. Their ethos is one of constant evolution, of pushing boundaries and introducing revolutionary methodologies that redefine our understanding and interaction with urban spaces. A recent testament to this unwavering commitment can be found in their transformative project on Edemekong Street in Uyo.

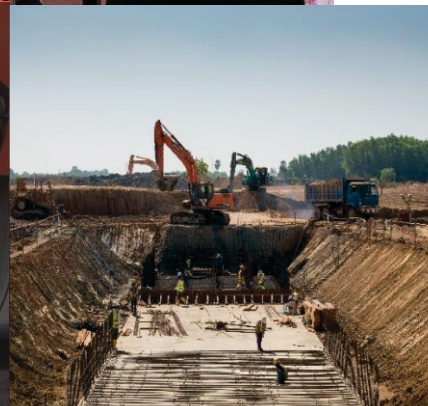




What sets Snaeder Engineering apart is their ability to seamlessly integrate cutting-edge design principles with construction methods that push the boundaries of what is deemed possible. This fusion of creative vision and technical expertise is the hallmark of their approach. In the context of Edemekong Street, this approach became a transformative force, reshaping the very contours of the urban experience.



**CONSTRUCTION OF THE ROAD
UYO, AKWAIBOM STATE**



FHE Road 2, nestled within the heart of Uyo, became a canvas for Snaeder Engineering's innovation to flourish. Known for its strategic location and importance in the urban fabric, the street presented both opportunities and challenges. Snaeder Engineering, however, saw beyond the surface, embracing the intricate dance of design and functionality that makes a space truly excellent.



International Airport,
Access Road,
Akwaibom State

Snaeder is playing a pivotal role in the development of Akwalbom. Through the design and construction of The International airport access roads to the central area, boulevards, highways and regional road networks as well as entire residential districts, Snaeder continues to augment urban development for the country's capital, according to the Akwalbom Master Plan.

FACILITY MAINTENANCE AND UPGRADE

As today Plants are designed with advanced technology in order to achieve high efficiency and output, they require complicated and precise plant maintenance in order to maintain their performance and prolong their lifetime.

With our staff's long term experience in Plant Maintenance, we can provide a variety of professional Maintenance Services for Power Generation, Petrochemical and Oil & Gas Industries.

Our maintenance services are provided to fit with customer requirements such as:

- Planned Outage maintenance
 - Contract maintenance services
 - Individual equipment maintenance
 - Field service and emergency troubleshooting
- Our expertise is in the following disciplines: Mechanical Maintenance of Rotating Machinery,
- Gas Turbine Combustion Inspection, Hot Gas Path Inspection and Major Overhaul for GE-MS 6001B, GE-MS 9001E, MS 5001LA up to R, Mitsubishi-MW 701D, SIEMENS V93.2
 - Trouble Shooting Mechanical Equipment and Processes
 - Steam Turbine Yearly Inspection, Minor Inspection and Major Overhaul
 - Centrifugal or Axial Flow Compressor Inspection and Overhaul
 - Centrifugal, Mixed Flow and Axial Flow Pump Inspection and Overhaul
 - Large Centrifugal Fan or Blower Inspection and Overhaul



Mechanical Maintenance for Boilers and Pipe work Annual Inspection of Heat Recovery Steam Generators and Auxiliary Equipment.

- Pressure Part Inspection
- Tube Replacement
- Steam Drum Inspection
- Boiler Water Circulating Pump Inspection
- Boiler Feed Water Pump Inspection
- Valve Inspection and Repair
- Boiler Casing Modification
- Damper Inspection and Repair Annual Inspection of Thermal and Auxiliary Equipment.
- Pressure Part Inspection
- Tube Replacement
- Gas Air Heater Inspection Electrical Maintenance
- Generator Inspection and Overhaul
- Motor Inspection and Overhaul
- Power and Distribution Transformer Inspection and Testing
- MV. and HV. Switch gear and Circuit Breaker Inspection and Testing
- Metering Inspection Testing and Calibration.
- AVR and Steam Turbine Control System Inspection and Testing.
- Protective Relay Inspection and Testing.
- Station Battery, Charger and UPS Maintenance.
- Troubleshooting of Electrical and Control Systems

PROJECT DESIGN AND CONSULTANCY



We offer the following building design services:

- Structural engineering
- Design management
- Heritage structures
- Building Information Modelling (BIM)
- Lighting design
- Electrical services design
- Mechanical services design
- Public health design
- Transportation Design and Build
- Crowd and egress modelling
- Safety and security
- Construction engineering
- Acoustics and vibration
- Wind engineering and modelling
- Seismic strengthening and low damage design
- Environmentally sustainable design
- Facade engineering
- Finite Element Analysis (FEA)
- Water Systems Design
- HVAC Design

Our clients have direct access to a team of highly qualified and experienced specialists offering consultancy services in building, road and industrial design, construction management as well as construction supervision and maintenance work. Snaeder Engineering has served as engineering consultant on almost every type of building project including, domestic housing, schools, hotels, sports centers, offices, factories, hospitals and health centers.



PIPELINE CONSTRUCTION & MAINTENANCE

Our services include:

- 🏗️ Pipeline construction
- 🏗️ Field and shop fabrication
- 🏗️ Pipeline maintenance and repair
- 🏗️ Right-of-way mowing and maintenance
- 🏗️ River crossings
- 🏗️ Corrosion control
- 🏗️ Sand blasting, field painting and tank lining
- 🏗️ Storage tank construction and maintenance
- 🏗️ Maintenance of valves
- 🏗️ Installation and calibration of meters
- 🏗️ Civil/structural works for pipelines
- 🏗️ Tank farm construction
- 🏗️ M&E
- 🏗️ Pipeline conversions
- 🏗️ Structural welding
- 🏗️ Procurement Services
- 🏗️ Transport
- 🏗️ General logistics
- 🏗️ Project Management services



PROCUREMENT SERVICES

- ✚ Sourcing
- ✚ Procurement
- ✚ Supply Chain Management
- ✚ Ordering
- ✚ Expediting
- ✚ Inspection
- ✚ Consolidation
- ✚ Marking, Packing, Tagging, Packing and onward shipment
- ✚ Importation
- ✚ OEM supplies
- ✚ Market surveys
- ✚ Analysis
- ✚ Negotiating
- ✚ Production
- ✚ Engineering
- ✚ Manufacturing
- ✚ Equipment and Materials
- ✚ Optimization
- ✚ Storage

- Electrical equipment & Materials- Switchgears,
- Transformers, Bus Ducts, cables, etc.
- Instrumentation, automation
- Umbilicals and submarine
- Cables
- Pumps and compressors
- Pipes, Valves & Fittings
- Structural Steel & Tubes
- Mill and tool
- Supplies Fire & Safety Equipment
- Heavy duty equipment- Cranes, forklifts,
- Ropes, Hawsers, Shackles & Chains.
- Crude Oil Export Hoses
- Skids and packaged systems
- Mechanical Equipment
- Drilling products

WATER RETICULATION

Through our trained personnel we undertake the following repair or replacement

- Dam Maintenance
- Irrigation Systems and Rehabilitation
- Electrical Systems and generating Sets
- Chemical preparation and oozing Equipment
- Pumping Units
- Leaking Transmission or Distribution Mains
- Well Intakes and Boreholes

- Drainage Desig Construction and maintenance
- Design and construction of irrigation systems
- Tank construction and erection
- Pump Services
- Dam Site Investigation
- Dam Design & Construction
- Water Distribution Network Design
- Design, Construction and Completion of water well (BOREHOLES)
- Design and construction of water supply of water schemes
- Hydro Geological Investigation
- Geophysical Investigations
- Site Investigation to locate sites for water supply projects



ELECTRICAL POWER FACILITIES



- Electrical Contracting: Industrial, Commercial and Residential
- Transformer Maintenance and Installation
- Substation Refurbishment
- Electrical of Rural Urban Areas
- Civil Structural Construction
- Tower Erection and Stringing
- Foundation Systems
- Substation Construction Works
- Power Generating Systems



INSTRUMENTATION AND CONTROL



- Flow Metering
- Calibration
- Facilities Installation
- Maintenance Services
- Procurement
- Process Automation
- Industrial Automation

DESIGN BUILDER AND CONSTRUCTION



Our expertise also extends to Design-Build Construction. After first examining the specifications of the owner, we assemble or team up with the design firm that has extensive experience in similar projects. This Design-Build team then acts as a cohesive unit with the designer developing the building's specifications, while we perform the constructability review.

During construction, our Design-Build team then acts as the single source of information for all design and construction issues. This creates a more effective line of communication between everyone involved with the project, which leads to a more successful project delivery system.

GREEN ENERGY

Snaeder Engineering is committed to a sustainable future. We specialize in green energy solutions, including solar, wind, hydropower, and biomass. Our expertise, innovation, and dedication to sustainability set us apart.

Why Choose Us:

- Expertise
- Innovation
- Sustainability
- Custom Solutions

Join the Green Revolution:

Partner with us to reduce your carbon footprint and build a cleaner, greener world. Contact us for sustainable energy solutions today.

AGRICULTURAL SOLUTIONS

Snaeder Engineering is dedicated to advancing agriculture sustainably. Discover our precision farming, machinery, greenhouse tech, irrigation solutions, and sustainable practices.

Our Impact:

We boost yields, reduce waste, and support sustainability, benefitting farmers and the environment.

Why Choose Us:

Expertise
Innovation
Sustainability
Custom Solutions
Elevate Your Agriculture:

Partner with us to increase yields, efficiency, and sustainability. Contact us to cultivate a brighter future in agriculture

The background features a complex, abstract pattern of thin black lines. These lines are arranged in a grid that is curved and distorted, creating a sense of depth and movement. The lines are more densely packed on the left side and become more sparse and curved towards the right. The overall effect is reminiscent of a stylized globe or a dynamic architectural structure.

PROJECTS **GALLERY**





OUR PROJECTS

Renewal of Facility maintenance contract. Appointed as Facility Manager of the Four Points by Sheraton Hotel (1 year facility maintenance contract)

Four - point hotel by Sheraton. Ikot Ekpene local government area Akwa Ibom state

Governor office. Finance and general-purpose committee (FGPC) and the Ministry of Special Duties

Engr. Ephraim Udosen

Tel: 08037441536

Completed

Installation of plant water irrigation system with drip tapes for onions plantation

Ministry of Agriculture

Tomatoes greenhouse farm. Victor Attah international airport

Director of Agriculture

Tel: 08037080234

Completed

Reconstruction of Swimming pool deck of the Four-Points by Sheraton Hotel

Ministry of Special Duties

Four-point hotel by Sheraton

Engr. Ephraim Udosen

Tel: 08037441536

Completed

Road construction. Award of contract for the construction of Abala Ahiala Ubi-Obete road Obingwa Local Government, Abia State

The Presidency. Niger Delta Development Commission (NDDC)

Obingwa Local Government. Abia State

Engr. Blessing Umoh

Tel: 0806010717

Completed

OUR PROJECTS

Facility maintenance contract.
Appointed as Facility Manager of the Four Points by Sheraton Hotel (1 year facility maintenance contract)

Four-point hotel by Sheraton. Ikot Ekpene local government area Akwa Ibom state

Governor office. Finance and general-purpose committee (FGPC)

Completed

Engr. Ephraim Udosen

Tel:
08037441536

Design, manufacture and installation of 20-meter-high Floodlighting Mast. (First in Nigeria)

21 Storey Dakkada Towers, Central Business District off Udo-udoma Avenue, Uyo, Akwa Ibom State.

Mr. Onyekachi Ashikodi

Tel:
08035426537

Completed

VKS Nigeria Construction Limited and the Ministry of Special Duties

Rehabilitation of tomatoes green house

Akwa Ibom state government Green houses Victor Attah international airport

Ministry of Agriculture

Director of agriculture

Tel:
08037080234

Completed

Procurement and installation of drip irrigation

Akwa Ibom state government onions production farm Okobo local government area

Ministry of Agriculture

Director of agriculture

Tel:
08037080234

Completed

OUR PROJECTS

Consultancy
Road design with shortage
drain and underground
drainage

Access road to new
terminal building
Victor Attah
international
airport

Ministry of
special duties
Akwa Ibom
state
government

Engr.
Nkereuwem

Tel:
08023264189

Completed

Design, fabrication and
installation of retractable
aircraft warning light
system

21 storey dakkada
towers' roof top

VKS Nigeria
construction
limited

Mr. Onyekachi
Ashikodi

Tel:
08035426537

Completed

Consultancy.
Stage 3: Project design
contributions and
Supervision of
construction works at the
New Victor Attah
International airport
terminal

Victor Attah
International
Airport

VKS Nigeria
Construction
Limited

Engr. Ephraim
Udosen

Tel:
08037441536

Completed

Design and Fabrication of
Steel Canopy Trussing Roof
top

21 Storey Dakkada
Towers, Central
Business District
off Udo-udoma
Avenue, Uyo,
Akwa Ibom State.

VKS Nigeria
Construction
Limited

Mr. Onyekachi
Ashikodi

Tel:
08035426537

Completed

OUR PROJECTS

Renovation of classroom blocks..... Mkpate in

Mkpate in local government Area Akwa Ibom state

The Presidency Niger Delta Development Commission (NDDC)

Mr. Boma Nduku
Tel: 08037244507

Completed

Consultancy: Design of steel trussing for roofing storage building

St. Gabriel coconut factory Mkpate in local government Area

VKS Nigeria Construction Limited

Engr. Ito Akwaowo

Tel: 09074461091

Completed

Road Design consultant. Design and drawing of roads and drain at the 21 Storey Dakkada towers high rise building

21 storey dakkada towers central business district off Udo-udoma avenue.

VKS Nigeria Construction Limited

Mr. Onyekachi Ashikodi

Tel: 08035426537

Completed

Consultancy. Stage 3: Project design contribution and construction works supervision of the 21 Storey Dakkada towers high rise building.

21 Storey dakkada towers central business district off udo-udoma avenue.

Ministry of special duties Akwa Ibom state

Arc. Ekanwan Alale

Tel: 08056803179

Completed



OUR PROJECTS

Road construction
1 kilometer with drains
and culvert

The
presidency.
Niger Delta
Development
Commission
(NDDC)

Road 2, federal
housing authority



Engr. Blessing
Umoh

Tel:
0806010717

Completed

Road Construction
Edemekong Edemekong
Street, Shelter afrique

The
presidency.
Niger Delta
Development
Commission
(NDDC)

Shelter Afrique
Estate, Uyo



Engr. Blessing
Umoh

Tel:
0806010717

Completed

Road Design consultant.
Design and drawing of
roads and drains

The
presidency.
Niger Delta
Development
Commission
(NDDC)

Port Harcourt

Engr. Mrs.
Alorye ogar

Tel:
07033593985

Completed

Road Design consultant.
Design and drawing of
roads and drains

The
presidency.
Niger Delta
Development
Commission
(NDDC)

Cross river

Engr. Mrs.
Alorye ogar

Tel:
07033593985

Completed

OUR PROJECTS

Road Design consultant.
Design and drawing of
roads and drains

Target Road
Calabar-south
Cross river state

The
presidency.
Niger Delta
Development
Commission
(NDDC)

Engr. Mrs.
Alorye ogar

Tel:
07033593985

Completed



Road design drawing for
St. Gabriel coconut
factory.

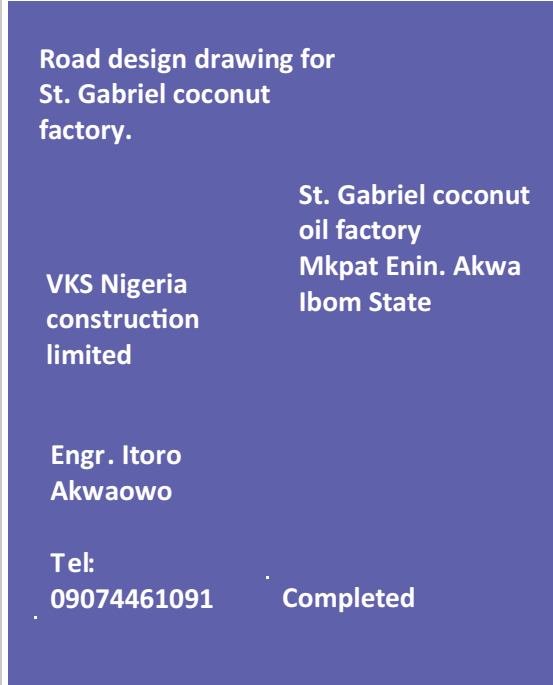
St. Gabriel coconut
oil factory
Mkpat Enin. Akwa
Ibom State

VKS Nigeria
construction
limited

Engr. Itoro
Akwaowo

Tel:
09074461091

Completed



Construction of cocoa
factory and fermentation
center.

Construction works on
factory ware house and
storage building.
Installation of equipment
including industrial gas fire
dryer, fermentation
boxes/pallet and
packaging machine.

Ini local
government area

Ministry of
agriculture
Akwa Ibom
State

Engr. Richard
Ekpe

Tel:
08039095815



Page 3
Construction supervision.
Consultancy services.
Consultant representing
Akwa Ibom State
government all drawing
design & construction
work of the contractor
(VKS Nigeria limited)

Ministry of
agriculture
Akwa Ibom
State

Engr. Richard
Ekpe

Tel:
08039095815

St. Gabriel coconut
factory
Mkpat Enin

Completed



OUR PROJECTS

Roadwork:
Drains

Eshiet-Uruan, Uyo,
Akwa Ibom State.

VERINI
CONSTRUCTION
LTD

Construction of 500
meters road drains
including cover slabs

Engr. Enang
(MOW)

Tel:
07032796932

Completed

Roadwork:
Outfall Drains

Awa, Onah LGA,
Akwa Ibom State.
Construction of 200
meters outfall drains
including cover slabs

WIZCHINO
ENGINEERING
(WE) LTD

Project value:
N21,600,000

Surveyor
Johnson
(MOW)

Tel:
08134720435

Completed

Roadwork:
Supply of Reinforcement
Rods and Special Wood for
construction

Project value:
N14,600,000
Airport Road,
Uyo
Construction supply

Project supply:
N9,200,000.

HAMMAKKOP
CONSTRUCTION

Completed

Building Construction

St. Nicholas
Primary School,
Ikot Ekara, Ikot
Abasi, Akwa Ibom
State.

Construction of
laboratory building

Project value:
N31,500,000.

Scope of work:
Construction of
Assembly hall and 1
No. classroom block
from foundation to
finish.

Project Manager:
Uwem Archibong

ROCHEL
GRILL LTD

Sub-contract of
Akwa Ibom State
Interministerial
Committee

Nsikak
Inyang

Tel:
08126431764

Completed

OUR PROJECTS

Building Construction

Rochel Grill Yard,
Ikot Abasi

**ROCHEL
GRILL LTD**
Construction of
laboratory building

Project value:
N15,500,000.

Scope of work:
Construction from
foundation to finishing
of laboratory
engineering for civil
and mechanical
properties testing.

Nsikak
Inyang
Tel:
08126431764

Project Manager:
Uwem Archibong

Completed

Fuel discharge gantry instrumentation works

Negril Oil &
Gas Nig. Ltd.
Okipp PLC
African
Development
Bank

Negril/Okipp tank
farm, Oku Iboku,
Itu, Akwa Ibom
State

Installation of gantry
metering system and
arms

Engr. Imoh
Ekaette

Project Value: NGN
2.5million

E-mail:
Imoh.ekkaete@negrigroup.com

Tel:
08023274024

Completed

Scaffolding and mechanical support systems

**RONESANS
Nigeria Ltd.**

IkotEkpene4- point
by Sheraton
Construction site
Provision of robotics
scaffolding mechanical
support systems

Monthly rentals

Engr .Jian

Tel:
08106769787

Completed

Pipeline maintenance works

Pipeline-routing,
construction and
maintenance works

Project Value: NGN
7.5million

Engr. Imoh
Ekaette

Negril/ Okipp tank
farm, Oku Iboku,
Itu, Akwa Ibom
State

Negril Oil &
Gas Nig. Ltd.
Okipp PLC
African
Development
Bank

E-mail:
Imoh.ekkaete@negrigroup.com

Tel:
08023274024

Completed

OUR PROJECTS

Water reticulation works

Negris Oil & Gas Nig. Ltd.
Okipp PLC
African Development Bank

Negris/Okipp tank farm, Oku Iboku, Itu, Akwa Ibom State

Water reticulation foreshorten farm and administrative buildings

Project Value: NGN 8.65million

Completed

Engr. Imoh

Ekaette

E-mail:

Imoh.ekkaete@negrisgroup.com

Tel:

08023274024



Foundation piling of 24 Pile Foundations

SEPTAENERGY / ACCUGAS Nigeria Limited

Michael Onaghinor

E-mail:

Michael.onaghinor@septenergy.com

Tel:

08036699481

IGRF Site, Ikot Abasi, Akwa Ibom State

Continuous Flight Auger Piling for Gas Plant Foundation Structures

Project Value: NGN36,000.

Scope of work: Provision of project management services from initiation to closure

Project Manager: Engr. Francis Uwah

Completed



Project management services: Foundation piling of 647 Pile Foundations

SEPTAENERGY / ACCUGAS Nigeria Limited / GRAMATEC INTEGRATED SERVICES LIMITED

Michael Onaghinor

E-mail:

Michael.onaghinor@septenergy.com

Tel:

08036699481

Uquo Gas Plant Site, Esit Eket, Akwa Ibom State

Continuous Flight Auger Piling for Gas Plant Foundation Structures

Project Value: NGN1,043,000

Scope of work: Provision of project management services from initiation to closure

Completed



Supply and construction of steel reinforcement baskets: Piling of Bridge Foundation

JDP Construction Company, Orkrika

Engr. Ekanikpong

E-mail: ekanicpong@yahoo.com

Tel:

08035881095

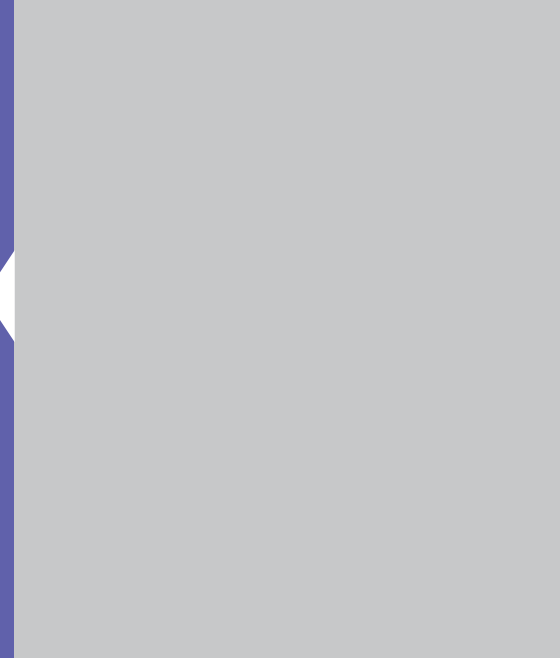
JDP Site, Orkrika, Rivers State, Nigeria
Concrete piling for Oil Platform

Project Value: NGN23.4million

No. of Pile baskets: 298

Scope of Piles: 500mm x 500mm x 22Meters Driven Pre-stressed Concrete Piling

Completed



OUR PROJECTS

Supply of materials for concreting: Foundation Piling for Shell School Building

Albaragen Energy Services Limited/Shell Petroleum Development Company

Engr. Ayodele Gabriel

E-mail: savourengr@yahoo.com

Tel: 08037900228

Shell Location, Ejegba, Delta State, Nigeria.

Continuous Flow Auger piling for Oil Platform
Project Value: NGN 8.65million
No. of Piles: 106

Scope of Piles: (228) 16" dia. x 30' LAugercastpiling

Completed

Installation of steel H pile sand temporary sheet piling

AiigerBurtel Nig.Ltd.

Engr. Etebom Felix

E-mail: etebom@yahoo.com

This day Melodrama and Performing Arts Building

Steel piling for Oil Construction Support Structures and Main Auditorium

Project Value: NGN

Completed

Installation of steel H pile sand temporary sheet piling

AiigerBurtel Nig.Ltd.

Engr. Etebom Felix

E-mail: etebom@yahoo.com

This day Melodrama and Performing Arts Building

Steel piling for Oil Construction Support Structures and Main Auditorium

Project Value: NGN 9.5million

Completed

Supply of materials for concreting: Piling of Oil Platform Legs

Albaragen Energy Services Limited/Shell Petroleum Development Company

Engr. Ayodele Gabriel

E-mail: savourengr@yahoo.com

Tel: 08037900228

Shell Location, Ughelli, Delta State Nigeria.
Concrete in-situ piling for Oil Platform

Project Value: NGN 13.8million

No. of Piles: 68

Scope of Piles: 400mm x 400mm x 18Meters Driven Pre-stressed Concrete Piling

Completed

